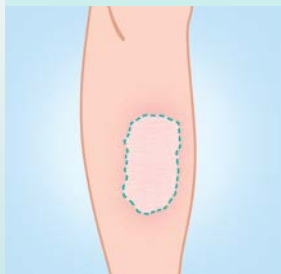


Tips for using DUOBRII™

1

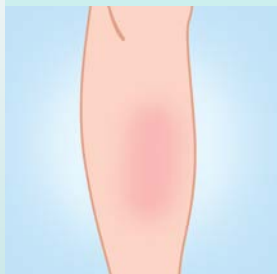
Once a day, gently rub a thin layer on the plaques only.



Do not apply to normal skin.

2

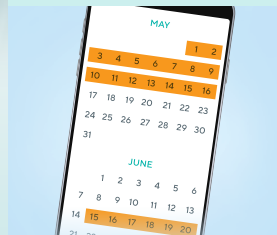
Repeat until you no longer feel the plaques, then stop.



Some colour may still be noticeable. This may fade in time, and doesn't require treatment.

3

After that, you may use DUOBRII on and off as necessary.



Treatment schedule shown may not apply to all patients.

Talk to your doctor if you have any questions about how to use DUOBRII.

Ensure that skin is dry before applying DUOBRII. If you get redness, peeling, or discomfort you can stop or reduce how often you apply DUOBRII. For example, you can try only applying DUOBRII every second or third day until the area is better and then return to using DUOBRII as prescribed by your healthcare professional.

Please see the patient information leaflet for complete dosing and administration information.

Download your DUOBRII Patient Information online

Your Doctor has prescribed DUOBRII for you and this information has been designed to help you get started. You can access these resources at www.ExperienceDuobrii.ca.

The following are available:

- “Understanding DUOBRII – A guide to your new psoriasis treatment”
 - information on using DUOBRII with helpful tips on how to apply it, frequently asked questions, and DOs and DON'Ts
- A Psoriasis Brochure from the Canadian Dermatology Association
- A video showing how to apply DUOBRII. It can also be viewed by scanning the QR code below.



Scan to view the How To Apply DUOBRII video or visit www.ExperienceDuobrii.ca.

If you would like more information on DUOBRII, please call Bausch Health, Canada Inc. at 1-800-361-4261.

Duobrii™
Halobetasol propionate **0.01%** w/w
and tazarotene **0.045%** w/w lotion

BAUSCH+Health bauschhealth.ca

DUOBRII™ is a trademark of Bausch Health Companies Inc. or its affiliates.
Bausch Health, Canada Inc., 2150 St-Elzéar Blvd. West, Laval, Quebec H7L 4A8
© 2023 Bausch Health, Canada Inc. All rights reserved.

